



HSCM0905 SERIES

1. FEATURES:

- (1) High rated currents, reduced components.
- (2) Wire wound structure common mode choke.□
- (3) Best EMI suppression effect high impedance.

2. APPLICATIONS:

- (1) Preventive measure against common mode noise.
- (2) Radiation emissions from power line or else.
- (3) Best for high current circuit such as car.
- (4) Wireless charging and power device design.
- (5) Industrial applications.

3. PART NUMBER SYSTEM:

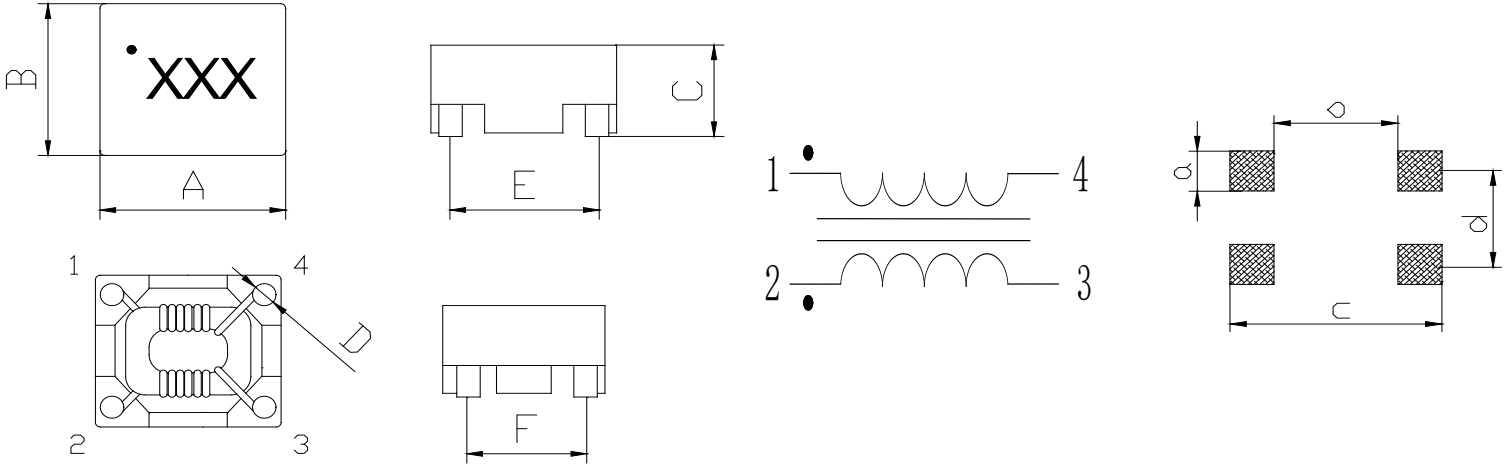
HSCM0905TL - 501

(1) (2) (3) (4)

- (1) Type, SMD Common Mode.
- (2) Size, e.g. 0905 is for 9mm*5mm.
- (3) TL is for reel tape pack
- (4) Impedance value

HSCM0905 SERIES

4. PHYSICAL CHARACTERISTICS:



TYPE	A	B	C	D	E	F	a	b	c	d
	Max	Max	Max	Ref	±0.3	±0.3	Ref	Ref	Ref	Ref
0905	9.80	8.60	5.30	1.20	7.50	6.30	2.70	4.90	10.3	6.30

5. ELECTRICAL CHARACTERISTICS:

Part Number	Inductance	Test Freq	DCR	Rated Current	Impedance	Freq.
	(uH)Typ		(mΩ)Max	(A)Max	(Ω)Typ	Range
						(MHz)
HSCMT0905TL-501	5	100KHz/0.1V	9	5	500	100
HSCMT0905TL-801	9	100KHz/0.1V	15	3.5	800	100
HSCMT0905TL-102	11	100KHz/0.1V	35	2.5	1000	100
HSCMT0905TL-152	18	100KHz/0.1V	50	2	1500	100
HSCMT0905TL-222	30	100KHz/0.1V	60	1.4	2200	100