

SHENZHEN HIGHSTARTECH ELECTRONICS CO., LTD

HSPK SERIES

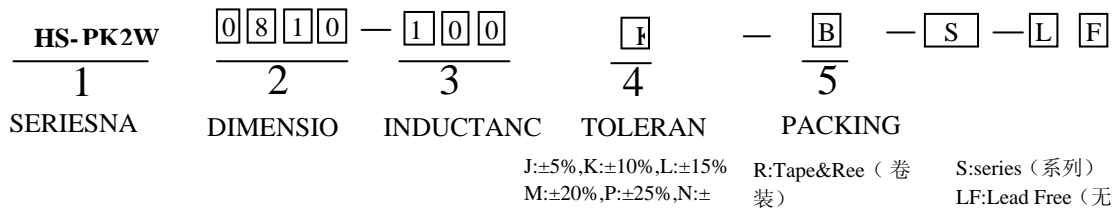
1. FEATURES:

- (1) Contain high-frequency ferrite.
- (2) Comparatively large rated current

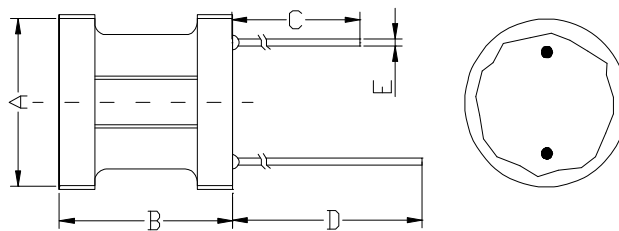
2. APPLICATIONS:

- (1) Power supplies,DC-DC converters.
- (2) TVs, VTRs, Computers, Computer peripherals.
- (3) Telephones, Air-conditions.
- (4) Home electric appliance, Electronic toys ad gammes.

3. PART NUMBER SYSTEM:



4. PHYSICAL CHARACTERISTICS:



Type	ΦA	B(max)	C(min)	D(min)	E	F
HS-PK0304	3.5±0.5	6.0±1	10	15	0.5	1.3
HS-PK0406	4.5±0.5	7.0±1	10	15	0.6	2
HS-PK0507	5.5±0.5	9.0±1	10	15	0.6	2.5
HS-PK0608	6.5±1.0	10.0±1	10	15	0.6	3
HS-PK0707	7.5±1.0	9.0±1	10	15	0.6	4.8
HS-PK0810	8.5±1.0	12.0±1	10	15	0.6	5
HS-PK0912	9.5±1.0	14.0±1	10	15	0.6	5
HS-PK1820	18.0(max)	20.0(max)	28	31	1	10

SHENZHEN HIGHSTARTECH ELECTRONICS CO., LTD

HSPK SERIES

5. ELECTRICAL CHARACTERISTICS:

HS-PK2W0304 SERIES

Part Number	Inductance (μH)	Q (min)	DCR(max) (Ω)	IDC(max) (mA)	SRF(min) (MHz)	Test Freq
HS-PK2W0304-1R0M	1.0	80	0.1	1000	175	7.96MHz
HS-PK2W0304-1R2M	1.2	80	0.1	1000	150	7.96MHz
HS-PK2W0304-1R5M	1.5	87	0.1	900	120	7.96MHz
HS-PK2W0304-1R8M	1.8	81	0.1	800	102	7.96MHz
HS-PK2W0304-2R2M	2.2	71	0.1	700	83	7.96MHz
HS-PK2W0304-2R7M	2.7	71	0.2	700	71	7.96MHz
HS-PK2W0304-3R3M	3.3	71	0.2	650	59	7.96MHz
HS-PK2W0304-3R9M	3.9	71	0.2	650	44	7.96MHz
HS-PK2W0304-4R7M	4.7	71	0.2	500	43	7.96MHz
HS-PK2W0304-5R6M	5.6	70	0.3	450	39	7.96MHz
HS-PK2W0304-6R8M	6.8	70	0.3	400	30	7.96MHz
HS-PK2W0304-8R2M	8.2	67	0.3	350	22	7.96MHz
HS-PK2W0304-100K	10.0	60	0.4	350	21	2.52MHz
HS-PK2W0304-120K	12	67	0.5	300	20	2.52MHz
HS-PK2W0304-150K	15.0	65	0.6	300	18	2.52MHz
HS-PK2W0304-180K	18	60	0.6	300	16	2.52MHz
HS-PK2W0304-220K	22.0	60	0.7	290	15	2.52MHz
HS-PK2W0304-270K	27	58	0.8	270	13	2.52MHz
HS-PK2W0304-330K	33.0	52	0.9	270	12	2.52MHz
HS-PK2W0304-390K	39	52	2	260	11	2.52MHz
HS-PK2W0304-470K	47.0	46	2	250	10	2.52MHz
HS-PK2W0304-560K	56	65	3	180	9	2.52MHz
HS-PK2W0304-680K	68.0	62	3	170	8	2.52MHz
HS-PK2W0304-820K	82	60	3	170	8	2.52MHz
HS-PK2W0304-101K	100.0	75	4	160	6	796KHz
HS-PK2W0304-121K	120	75	4	150	6	796KHz
HS-PK2W0304-151K	150.0	75	4	150	5	796KHz
HS-PK2W0304-181K	180	75	5	130	4	796KHz
HS-PK2W0304-221K	220.0	77	8	100	4	796KHz

SHENZHEN HIGHSTARTECH ELECTRONICS CO., LTD

HSPK SERIES

HS-PK2W0304-271K	270	80	9	90	4	796KHz
HS-PK2W0304-331K	330.0	81	10	90	3.5	796KHz
HS-PK2W0304-391K	390	80	10	80	3.5	796KHz
HS-PK2W0304-471K	470.0	80	11	80	3	796KHz
HS-PK2W0304-561K	560	80	15	70	3	796KHz
HS-PK2W0304-681K	680.0	65	23	50	2	796KHz
HS-PK2W0304-821K	820	65	26	50	2	796KHz
HS-PK2W0304-102K	1000.0	36	29	50	1.5	252KHz
HS-PK2W0304-122K	1200	36	33	40	1.5	252KHz
HS-PK2W0304-152K	1500.0	37	37	40	1.5	252KHz
HS-PK2W0304-182K	1800	44	41	40	1.5	252KHz
HS-PK2W0304-222K	2200.0	44	46	30	1.5	252KHz
HS-PK2W0304-272K	2700	47	51	30	1.5	252KHz

SHENZHEN HIGHSTARTECH ELECTRONICS CO., LTD

HSPK SERIES

HS-PK2W0406 SERIES

Part Number	Inductance (μH)	Q (min)	DCR(max) (Ω)	IDC(max) (mA)	SRF(min) (MHz)	Test Freq
HS-PK2W0406-1R0M	1.0	84	0.10	1400	200	7.96MHz
HS-PK2W0406-1R2M	1.2	70	0.12	1200	170	7.96MHz
HS-PK2W0406-1R5M	1.5	80	0.15	1200	140	7.96MHz
HS-PK2W0406-1R8M	1.8	90	0.17	1100	130	7.96MHz
HS-PK2W0406-2R2M	2.2	98	0.20	1100	125	7.96MHz
HS-PK2W0406-2R7M	2.7	94	0.20	1300	113	7.96MHz
HS-PK2W0406-3R3M	3.3	93	0.22	1300	92	7.96MHz
HS-PK2W0406-3R9M	3.9	86	0.24	1300	77	7.96MHz
HS-PK2W0406-4R7M	4.7	84	0.26	800	58	7.96MHz
HS-PK2W0406-5R6M	5.6	84	0.28	800	42	7.96MHz
HS-PK2W0406-6R8M	6.8	82	0.30	800	35	7.96MHz
HS-PK2W0406-8R2M	8.2	77	0.35	800	32	7.96MHz
HS-PK2W0406-100K	10	70	0.46	700	27	2.52MHz
HS-PK2W0406120K	12	80	0.48	600	20	2.52MHz
HS-PK2W0406-150K	15	77	0.55	600	18	2.52MHz
HS-PK2W0406-180K	18	87	0.65	500	16	2.52MHz
HS-PK2W0406-220K	22	84	0.72	500	14	2.52MHz
HS-PK2W0406-270K	27	77	0.78	400	13	2.52MHz
HS-PK2W0406-330K	33	74	0.87	400	12	2.52MHz
HS-PK2W0406-390K	39	70	0.90	400	11	2.52MHz
HS-PK2W0406-470K	47	65	0.98	400	10	2.52MHz
HS-PK2W0406-560K	56	58	1.50	3200	9.5	2.52MHz
HS-PK2W0406-680K	68	55	1.90	300	9	2.52MHz
HS-PK2W0406-820K	82	53	2.50	300	8.6	2.52MHz
HS-PK2W0406-101K	100	56	3.00	200	7	796KHz
HS-PK2W0406-121K	120	70	3.80	200	6.3	796KHz
HS-PK2W0406-151K	150	63	4.50	200	5.7	796KHz
HS-PK2W0406-181K	180	62	5.00	200	5.3	796KHz
HS-PK2W0406-221K	220	66	5.80	200	5	796KHz

SHENZHEN HIGHSTARTECH ELECTRONICS CO., LTD

HSPK SERIES

HS-PK2W0406-271K	270	66	6.50	150	4.5	796KHz
HS-PK2W0406-331K	330	60	7.00	150	4	796KHz
HS-PK2W0406-391K	390	56	7.70	150	3.8	796KHz
HS-PK2W0406-471K	470	61	8.00	120	3.5	796KHz
HS-PK2W0406-561K	560	59	8.50	120	3.2	796KHz
HS-PK2W0406-681K	680	56	9.50	120	3	796KHz
HS-PK2W0406-821K	820	61	15	100	2.8	796KHz
HS-PK2W0406-102K	1000	77	17	100	2.5	252KHz
HS-PK2W0406-122K	1200	71	20	80	2.3	252KHz
HS-PK2W0406-152K	1500	76	22	80	2.1	252KHz
HS-PK2W0406-182K	1800	77	25	70	1.8	252KHz
HS-PK2W0406-222K	2200	81	26	60	1.6	252KHz
HS-PK2W0406-272K	2700	57	46	40	1.36	252KHz
HS-PK2W0406-332K	3300	60	50	30	1.27	252KHz
HS-PK2W0406-392K	3900	56	54	30	1.20	252KHz
HS-PK2W0406-472K	4700	65	60	30	1.06	252KHz
HS-PK2W0406-562K	5600	66	65	30	1.02	252KHz
HS-PK2W0406-682K	6800	66	72	30	0.96	252KHz
HS-PK2W0406-822K	8200	70	80	20	0.93	252KHz
HS-PK2W0406-103K	10000	35	95	10	0.89	79.6KHz

SHENZHEN HIGHSTARTECH ELECTRONICS CO., LTD

HSPK SERIES

HS-PK2W0507 SERIES

Part Number	Inductance (μH)	Q (min)	DCR(max) (Ω)	IDC(max) (mA)	SRF(min) (MHz)	Test Freq
HS-PK2W0507-1R0M	1.0	85	0.014	3500	120	7.96MHz
HS-PK2W0507-1R5M	1.5	85	0.020	3000	90	7.96MHz
HS-PK2W0507-2R2M	2.2	85	0.020	2500	55	7.96MHz
HS-PK2W0507-3R3M	3.3	85	0.030	2000	50	7.96MHz
HS-PK2W0507-4R7M	4.7	80	0.040	1700	30	7.96MHz
HS-PK2W0507-6R8M	6.8	75	0.060	1300	25	7.96MHz
HS-PK2W0507-100K	10	70	0.080	1000	22	2.52MHz
HS-PK2W0507-120K	12	70	0.100	950	20	2.52MHz
HS-PK2W0507-150K	15	65	0.110	900	16	2.52MHz
HS-PK2W0507-180K	18	50	0.110	800	14	2.52MHz
HS-PK2W0507-220K	22	50	0.120	700	14	2.52MHz
HS-PK2W0507-270K	27	50	0.140	600	12	2.52MHz
HS-PK2W0507-330K	33	50	0.160	550	10	2.52MHz
HS-PK2W0507-390K	39	45	0.180	500	9.0	2.52MHz
HS-PK2W0507-470K	47	45	0.200	500	9.0	2.52MHz
HS-PK2W0507-560K	56	35	0.220	450	8.0	2.52MHz
HS-PK2W0507-680K	68	35	0.300	450	8.0	2.52MHz
HS-PK2W0507-820K	82	35	0.340	400	7.0	2.52MHz
HS-PK2W0507-101K	100	20	0.360	400	6.0	796KHz
HS-PK2W0507-121K	120	20	0.440	350	5.5	796KHz
HS-PK2W0507-151K	150	20	0.520	300	5.0	796KHz
HS-PK2W0507-181K	180	20	0.650	300	4.5	796KHz
HS-PK2W0507-221K	220	20	0.750	250	4.0	796KHz
HS-PK2W0507-271K	270	25	0.100	240	3.5	796KHz
HS-PK2W0507-331K	330	25	1.300	200	3.0	796KHz
HS-PK2W0507-391K	390	25	1.400	180	3.0	796KHz
HS-PK2W0507-471K	470	25	1.600	160	3.0	796KHz
HS-PK2W0507-561K	560	25	2.000	160	2.7	796KHz
HS-PK2W0507-681K	680	25	2.300	140	2.5	796KHz
HS-PK2W0507-821K	820	25	2.700	130	2.4	796KHz
HS-PK2W0507-102K	1000	25	3.100	120	2.2	252KHz

SHENZHEN HIGHSTARTECH ELECTRONICS CO., LTD

HSPK SERIES

HS-PK2W0507-122K	1200	50	4.600	110	2.0	252KHz
HS-PK2W0507-152K	1500	65	5.300	100	1.5	252KHz
HS-PK2W0507-182K	1800	65	6.200	90	1.3	252KHz
HS-PK2W0507-222K	2200	65	6.800	80	1.2	252KHz
HS-PK2W0507-272K	2700	80	10.000	60	1.1	252KHz
HS-PK2W0507-332K	3300	75	12.000	60	1.0	252KHz
HS-PK2W0507-392K	3900	70	13.000	55	0.95	252KHz
HS-PK2W0507-472K	4700	65	15.000	55	0.9	252KHz
HS-PK2W0507-562K	5600	65	22.000	50	0.90	252KHz
HS-PK2W0507-682K	6800	65	25.000	45	0.8	252KHz
HS-PK2W0507-822K	8200	65	28.000	45	0.75	252KHz
HS-PK2W0507-103K	10000	65	35.000	35	0.7	79.6KHz
HS-PK2W0507-123K	12000	65	45.000	30	0.60	79.6KHz
HS-PK2W0507-153K	15000	65	52.000	30	0.45	79.6KHz
HS-PK2W0507-183K	18000	65	58.000	30	0.40	79.6KHz
HS-PK2W0507-223K	22000	65	80.000	20	0.4	79.6KHz
HS-PK2W0507-273K	27000	65	90.000	20	0.350	79.6KHz
HS-PK2W0507-333K	33000	55	135.000	15	0.3	79.6KHz
HS-PK2W0507-393K	39000	55	150.000	15	0.25	79.6KHz
HS-PK2W0507-473K	47000	55	170.000	15	0.25	79.6KHz

SHENZHEN HIGHSTARTECH ELECTRONICS CO., LTD

HSPK SERIES

HS-PK2W0608 SERIES

Part Number	Inductance (μ H)	Q (min)	DCR(max) (Ω)	IDC(max) (mA)	SRF(min) (MHz)	Test Freq
HS-PK2W0608-100K	10	25	0.09	1300	16	2.52MHz
HS-PK2W0608-120K	12	25	0.10	1100	15	2.52MHz
HS-PK2W0608-150K	15	25	0.11	1050	13	2.52MHz
HS-PK2W0608-180K	18	20	0.12	1000	12	2.52MHz
HS-PK2W0608-220K	22	25	0.12	960	11	2.52MHz
HS-PK2W0608-270K	27	25	0.17	920	10	2.52MHz
HS-PK2W0608-330K	33	25	0.19	880	8.8	2.52MHz
HS-PK2W0608-390K	39	20	0.22	860	8.4	2.52MHz
HS-PK2W0608-470K	47	20	0.23	830	8.2	2.52MHz
HS-PK2W0608-560K	56	20	0.29	810	7.9	2.52MHz
HS-PK2W0608-680K	68	20	0.37	750	7	2.52MHz
HS-PK2W0608-820K	82	20	0.39	740	6.5	2.52MHz
HS-PK2W0608-101K	100	30	0.44	710	5.7	796KHz
HS-PK2W0608-121K	120	30	0.64	680	5.2	796KHz
HS-PK2W0608-151K	150	35	0.73	600	4.7	796KHz
HS-PK2W0608-181K	180	35	0.82	540	4.2	796KHz
HS-PK2W0608-221K	220	35	0.92	450	3.7	796KHz
HS-PK2W0608-271K	270	30	1.3	420	3.5	796KHz
HS-PK2W0608-331K	330	40	1.50	400	3.2	796KHz
HS-PK2W0608-391K	390	25	1.8	370	2.9	796KHz
HS-PK2W0608-471K	470	35	2.30	340	2.4	796KHz
HS-PK2W0608-561K	560	35	3.0	280	2.2	796KHz
HS-PK2W0608-681K	680	45	3.25	250	2	796KHz
HS-PK2W0608-821K	820	40	4.2	230	1.6	796KHz
HS-PK2W0608-102K	1000	80	4.55	210	1.5	252KHz
HS-PK2W0608-122K	1200	80	5.2	200	1.4	252KHz
HS-PK2W0608-152K	1500	75	7.54	180	1.3	252KHz
HS-PK2W0608-182K	1800	80	7.5	160	1.2	252KHz
HS-PK2W0608-222K	2200	80	8.32	150	1.1	252KHz
HS-PK2W0608-272K	2700	80	9.62	130	1.0	252KHz
HS-PK2W0608-332K	3300	80	10.92	130	0.85	252KHz

SHENZHEN HIGHSTARTECH ELECTRONICS CO., LTD

HSPK SERIES

HS-PK2W0608-392K	3900	80	16.12	100	0.78	252KHz
HS-PK2W0608-472K	4700	80	17.81	85	0.68	252KHz
HS-PK2W0608-562K	5600	80	20.0	70	0.62	252KHz
HS-PK2W0608-682K	6800	80	27.30	65	0.61	252KHz
HS-PK2W0608-822K	8200	80	31.2	60	0.60	252KHz
HS-PK2W0608-103K	10000	80	39.00	58	0.48	79.6KHz
HS-PK2W0608-123K	12000	80	42.9	56	0.44	79.6KHz
HS-PK2W0608-153K	15000	70	65.00	53	0.35	79.6KHz
HS-PK2W0608-183K	18000	75	72.8	50	0.30	79.6KHz
HS-PK2W0608-223K	22000	80	82.55	46	0.28	79.6KHz
HS-PK2W0608-273K	27000	80	95.4	42	0.250	79.6KHz
HS-PK2W0608-333K	33000	70	135.20	38	0.23	79.6KHz
HS-PK2W0608-393K	39000	70	154.7	37	0.20	79.6KHz
HS-PK2W0608-473K	47000	70	172.90	35	0.16	79.6KHz

SHENZHEN HIGHSTARTECH ELECTRONICS CO., LTD

HSPK SERIES

HS-PK2W0707 SERIES

Part Number	Inductance (μH)	Q (min)	DCR(max) (Ω)	IDC(max) (mA)	SRF(min) (MHz)	Test Freq
HS-PK2W0707-1R0M	1	90	0.01	5980	100.00	7.96MHz
HS-PK2W0707-1R5M	1.5	90	0.017	4850	80.00	7.96MHz
HS-PK2W0707-2R2M	2.2	90	0.02	3560	40.00	7.96MHz
HS-PK2W0707-3R3M	3.3	90	0.021	2970	40.00	7.96MHz
HS-PK2W0707-4R7M	4.7	90	0.03	2340	36.00	7.96MHz
HS-PK2W0707-6R8M	6.8	90	0.054	1980	30.00	7.96MHz
HS-PK2W0707-100K	10	85	0.08	1980	15.00	2.52MHz
HS-PK2W0707-120K	12	85	0.090	1880	15.00	2.52MHz
HS-PK2W0707-150K	15	65	0.11	1650	15.00	2.52MHz
HS-PK2W0707-180K	18	65	0.12	1550	15.00	2.52MHz
HS-PK2W0707-220K	22	65	0.13	1413	11.00	2.52MHz
HS-PK2W0707-270K	27	50	0.14	1278	11.00	2.52MHz
HS-PK2W0707-330K	33	50	0.15	1161	11.00	2.52MHz
HS-PK2W0707-390K	39	50	0.16	1062	11.00	2.52MHz
HS-PK2W0707-470K	47	50	0.22	972	7.00	2.52MHz
HS-PK2W0707-560K	56	50	0.25	891	7.00	2.52MHz
HS-PK2W0707-680K	68	40	0.31	810	7.00	2.52MHz
HS-PK2W0707-820K	82	40	0.34	729	7.00	2.52MHz
HS-PK2W0707-101K	100	40	0.43	675	4.00	796KHz
HS-PK2W0707-121K	120	40	0.56	630	4.00	796KHz
HS-PK2W0707-151K	150	60	0.94	531	4.00	796KHz
HS-PK2W0707-181K	180	60	1.02	504	4.00	796KHz
HS-PK2W0707-221K	220	60	1.14	477	4.00	796KHz
HS-PK2W0707-271K	270	60	1.29	432	3.00	796KHz
HS-PK2W0707-331K	330	70	2.04	387	3.00	796KHz
HS-PK2W0707-391K	390	70	2.24	360	2.00	796KHz
HS-PK2W0707-471K	470	70	2.51	333	2.00	796KHz
HS-PK2W0707-561K	560	55	2.83	306	2.00	796KHz
HS-PK2W0707-681K	680	55	3.08	279	2.00	796KHz
HS-PK2W0707-821K	820	55	3.41	261	2.00	796KHz
HS-PK2W0707-102K	1000	75	3.90	189	1.50	252KHz

SHENZHEN HIGHSTARTECH ELECTRONICS CO., LTD

HSPK SERIES

HS-PK2W0707-122K	1200	75	4.42	180	1.50	252KHz
HS-PK2W0707-152K	1500	75	5.11	162	1.50	252KHz
HS-PK2W0707-182K	1800	75	5.81	144	1.00	252KHz
HS-PK2W0707-222K	2200	75	8.38	135	1.00	252KHz
HS-PK2W0707-272K	2700	75	9.59	126	1.00	252KHz
HS-PK2W0707-332K	3300	75	11.04	117	1.00	252KHz
HS-PK2W0707-392K	3900	75	12.5	108	0.80	252KHz
HS-PK2W0707-472K	4700	75	14.30	99	0.80	252KHz
HS-PK2W0707-562K	5600	70	16.0	90	0.80	252KHz
HS-PK2W0707-682K	6800	70	20.90	81	0.50	252KHz
HS-PK2W0707-822K	8200	70	29.2	72	0.50	252KHz
HS-PK2W0707-103K	10000	70	33.40	63	0.50	79.6KHz
HS-PK2W0707-123K	12000	70	43.1	54	0.50	79.6KHz
HS-PK2W0707-153K	15000	70	50.50	54	0.50	79.6KHz
HS-PK2W0707-183K	18000	70	69.1	45	0.30	79.6KHz
HS-PK2W0707-223K	22000	70	80.60	36	0.30	79.6KHz
HS-PK2W0707-273K	27000	70	94.2	27	0.30	79.6KHz
HS-PK2W0707-333K	33000	70	139.00	18	0.30	79.6KHz
HS-PK2W0707-393K	39000	70	155.6	18	0.30	79.6KHz
HS-PK2W0707-473K	47000	70	176.60	18	0.30	79.6KHz

SHENZHEN HIGHSTARTECH ELECTRONICS CO., LTD

HSPK SERIES

HS-PK2W0810 SERIES

Part Number	Inductance (μH)	Q (min)	DCR(max) (Ω)	IDC(max) (mA)	SRF(min) (MHz)	Test Freq
HS-PK2W0810-1R0M	1	90	0.02	3400	100	7.96MHz
HS-PK2W0810-1R2M	1.2	90	0.02	3400	90	7.96MHz
HS-PK2W0810-1R5M	1.5	95	0.02	3400	80	7.96MHz
HS-PK2W0810-1R8M	1.8	95	0.03	3300	75	7.96MHz
HS-PK2W0810-2R2M	2.2	100	0.03	3000	70	7.96MHz
HS-PK2W0810-2R7M	2.7	110	0.04	3000	60	7.96MHz
HS-PK2W0810-3R3M	3.3	110	0.04	3000	56	7.96MHz
HS-PK2W0810-3R9M	3.9	110	0.05	2900	52	7.96MHz
HS-PK2W0810-4R7M	4.7	110	0.05	2900	30	7.96MHz
HS-PK2W0810-5R6M	5.6	110	0.06	2600	30	7.96MHz
HS-PK2W0810-6R8M	6.8	90	0.06	2500	20	7.96MHz
HS-PK2W0810-8R2M	8.2	80	0.06	2000	17	7.96MHz
HS-PK2W0810-100K	10	90	0.10	1600	12	2.52MHz
HS-PK2W0810-120K	12	90	0.10	1400	11	2.52MHz
HS-PK2W0810-150K	15	90	0.10	1300	10	2.52MHz
HS-PK2W0810-180K	18	80	0.11	1200	9.0	2.52MHz
HS-PK2W0810-220K	22	70	0.13	1100	8.0	2.52MHz
HS-PK2W0810-270K	27	70	0.14	1000	7.0	2.52MHz
HS-PK2W0810-330K	33	70	0.16	900	7.0	2.52MHz
HS-PK2W0810-390K	39	70	0.16	800	6.0	2.52MHz
HS-PK2W0810-470K	47	70	0.16	700	5.5	2.52MHz
HS-PK2W0810-560K	56	60	0.22	700	5.5	2.52MHz
HS-PK2W0810-680K	68	60	0.23	600	5.0	2.52MHz
HS-PK2W0810-820K	82	60	0.27	500	4.5	2.52MHz
HS-PK2W0810-101K	100	40	0.29	400	4.5	796KHz
HS-PK2W0810-121K	120	40	0.33	400	4.5	796KHz
HS-PK2W0810-151K	150	40	0.46	350	4.5	796KHz
HS-PK2W0810-181K	180	40	0.51	350	4.0	796KHz
HS-PK2W0810-221K	220	40	0.62	300	3.5	796KHz
HS-PK2W0810-271K	270	30	0.65	250	3.0	796KHz
HS-PK2W0810-331K	330	30	0.79	250	3.0	796KHz

SHENZHEN HIGHSTARTECH ELECTRONICS CO., LTD

HSPK SERIES

HS-PK2W0810-391K	390	30	0.91	200	2.5	796KHz
HS-PK2W0810-471K	470	30	1.20	180	2.5	796KHz
HS-PK2W0810-561K	560	30	1.20	160	2.0	796KHz
HS-PK2W0810-681K	680	30	1.50	140	2.0	796KHz
HS-PK2W0810-821K	820	25	1.7	140	2.0	796KHz
HS-PK2W0810-102K	1000	50	2.00	120	2.0	252KHz
HS-PK2W0810-122K	1200	45	2.3	100	1.5	252KHz
HS-PK2W0810-152K	1500	45	2.90	80	1.5	252KHz
HS-PK2W0810-182K	1800	45	3.5	80	1.5	252KHz
HS-PK2W0810-222K	2200	50	4.20	70	1.0	252KHz
HS-PK2W0810-272K	2700	50	5.1	60	1.0	252KHz
HS-PK2W0810-332K	3300	50	6.10	60	0.9	252KHz
HS-PK2W0810-392K	3900	50	7.8	50	0.8	252KHz
HS-PK2W0810-472K	4700	55	11	50	0.7	252KHz
HS-PK2W0810-562K	5600	55	11	45	0.6	252KHz
HS-PK2W0810-682K	6800	55	14	45	0.6	252KHz
HS-PK2W0810-822K	8200	60	15	40	0.6	252KHz
HS-PK2W0810-103K	10000	100	20	35	0.5	79.6KHz
HS-PK2W0810-123K	12000	100	24	35	0.4	79.6KHz
HS-PK2W0810-153K	15000	100	28	35	0.4	79.6KHz
HS-PK2W0810-183K	18000	100	42	30	0.4	79.6KHz
HS-PK2W0810-223K	22000	100	43	30	0.3	79.6KHz
HS-PK2W0810-273K	27000	100	55	25	0.3	79.6KHz
HS-PK2W0810-333K	33000	90	65	25	0.3	79.6KHz
HS-PK2W0810-393K	39000	90	87	25	0.2	79.6KHz
HS-PK2W0810-473K	47000	85	98	25	0.2	79.6KHz
HS-PK2W0810-563K	56000	80	128	20	0.2	79.6KHz
HS-PK2W0810-683K	68000	70	141	20	0.2	79.6KHz
HS-PK2W0810-823K	82000	70	161	20	0.2	79.6KHz
HS-PK2W0810-104K	100000	55	180	20	0.2	79.6KHz

SHENZHEN HIGHSTARTECH ELECTRONICS CO., LTD

HSPK SERIES

HS-PK2W0912 SERIES

Part Number	Inductance (μH)	Q (min)	DCR(max) (Ω)	IDC(max) (mA)	SRF(min) (MHz)	Test Freq
HS-PK2W0912-100K	10	110	0.04	2800	24	2.52MHz
HS-PK2W0912-120K	12	110	0.04	2700	18	2.52MHz
HS-PK2W0912-150K	15	110	0.05	2300	11	2.52MHz
HS-PK2W0912-180K	18	90	0.06	2100	8.4	2.52MHz
HS-PK2W0912-220K	22	90	0.07	2000	9.2	2.52MHz
HS-PK2W0912-270K	27	90	0.10	1700	7.1	2.52MHz
HS-PK2W0912-330K	33	90	0.12	1500	7.1	2.52MHz
HS-PK2W0912-390K	39	80	0.12	1400	6.9	2.52MHz
HS-PK2W0912-470K	47	70	0.13	1300	6	2.52MHz
HS-PK2W0912-560K	56	70	0.14	1200	5.7	2.52MHz
HS-PK2W0912-680K	68	60	0.15	1000	5.4	2.52MHz
HS-PK2W0912-820K	82	50	0.16	900	4.6	2.52MHz
HS-PK2W0912-101K	100	60	0.25	700	4	796KHz
HS-PK2W0912-121K	120	60	0.28	700	3.6	796KHz
HS-PK2W0912-151K	150	55	0.32	700	3.1	796KHz
HS-PK2W0912-181K	180	55	0.47	600	2.8	796KHz
HS-PK2W0912-221K	220	55	0.53	500	2.5	796KHz
HS-PK2W0912-271K	270	50	0.6	450	2.4	796KHz
HS-PK2W0912-331K	330	50	0.85	400	2	796KHz
HS-PK2W0912-391K	390	50	1.0	350	2.1	796KHz
HS-PK2W0912-471K	470	40	1.10	350	1.9	796KHz
HS-PK2W0912-561K	560	30	1.2	300	1.8	796KHz
HS-PK2W0912-681K	680	30	1.30	250	1.7	796KHz
HS-PK2W0912-821K	820	30	1.4	200	1.5	796KHz
HS-PK2W0912-102K	1000	70	2.00	200	1.1	252KHz
HS-PK2W0912-122K	1200	70	2.3	180	1.0	252KHz
HS-PK2W0912-152K	1500	70	2.90	150	1	252KHz
HS-PK2W0912-182K	1800	70	3.3	120	0.9	252KHz
HS-PK2W0912-222K	2200	70	4.50	110	0.7	252KHz
HS-PK2W0912-272K	2700	70	5.5	90	0.7	252KHz
HS-PK2W0912-332K	3300	60	5.70	80	0.6	252KHz

SHENZHEN HIGHSTARTECH ELECTRONICS CO., LTD

HSPK SERIES

HS-PK2W0912-392K	3900	60	6.5	80	0.6	252KHz
HS-PK2W0912-472K	4700	60	7.20	60	0.6	252KHz
HS-PK2W0912-562K	5600	60	9.5	50	0.5	252KHz
HS-PK2W0912-682K	6800	60	11.00	50	0.5	252KHz
HS-PK2W0912-822K	8200	50	13	50	0.4	252KHz
HS-PK2W0912-103K	10000	120	16.00	40	0.3	79.6KHz
HS-PK2W0912-123K	12000	120	18	40	0.3	79.6KHz
HS-PK2W0912-153K	15000	110	21.00	40	0.3	79.6KHz
HS-PK2W0912-183K	18000	110	23	40	0.3	79.6KHz
HS-PK2W0912-223K	22000	110	33.00	35	0.2	79.6KHz
HS-PK2W0912-273K	27000	100	37	35	0.2	79.6KHz
HS-PK2W0912-333K	33000	90	42.00	35	0.2	79.6KHz
HS-PK2W0912-393K	39000	90	45	30	0.2	79.6KHz
HS-PK2W0912-473K	47000	80	52.00	30	0.2	79.6KHz

SHENZHEN HIGHSTARTECH ELECTRONICS CO., LTD

HSPK SERIES

HS-PK2W1820 SERIES

Part Number	Inductance (μ H)	DCR(max) (Ω)	IDC(A) (max) Δ L/L=-25%; Δ t=40°C	Test Freq
HS-PK2W1820-220M	22	30	5.70	1KHz
HS-PK2W1820-270M	27	33	5.00	1KHz
HS-PK2W1820-330K	33	35	4.80	1KHz
HS-PK2W1820-390K	39	38	4.50	1KHz
HS-PK2W1820-470K	47	44	4.20	1KHz
HS-PK2W1820-560K	56	48	4.00	1KHz
HS-PK2W1820-680K	68	55	3.80	1KHz
HS-PK2W1820-820K	82	66	3.50	1KHz
HS-PK2W1820-101K	100	82	3.20	1KHz
HS-PK2W1820-121K	120	98	3.00	1KHz
HS-PK2W1820-151K	150	110	2.70	1KHz
HS-PK2W1820-181K	180	130	2.50	1KHz
HS-PK2W1820-221K	220	160	2.30	1KHz
HS-PK2W1820-271K	270	190	2.00	1KHz
HS-PK2W1820-331K	330	260	1.80	1KHz
HS-PK2W1820-391K	390	290	1.70	1KHz
HS-PK2W1820-471K	470	330	1.50	1KHz
HS-PK2W1820-561K	560	410	1.40	1KHz
HS-PK2W1820-681K	680	460	1.30	1KHz
HS-PK2W1820-821K	820	630	1.10	1KHz
HS-PK2W1820-102K	1000	710	1.00	1KHz

SHENZHEN HIGHSTARTECH ELECTRONICS CO., LTD

HSPP SERIES

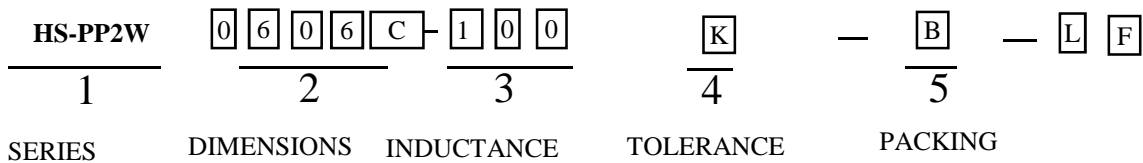
1. FEATURES:

- (1) Contain high-frequency ferrite.
- (2) Comparatively large rated current

2. APPLICATIONS:

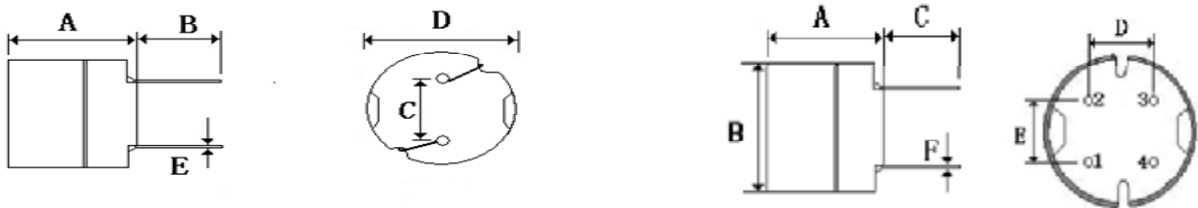
- (1) Power supplies,DC-DC converters.
- (2) TVs, VTRs, Computers, Computer peripherals.
- (3) Telephones, Air-conditions.
- (4) Home electric appliance, Electronic toys ad gammes.

3. PART NUMBER SYSTEM:



J:±5%,K:±10%,L:±15% R:Tape&Ree (卷装)
M:±20%,P:±25%,N:±30% B:In Bulk (散装) LF:Lead Free (无铅)

4. PHYSICAL CHARACTERISTICS:



P/N	A	B	C	D	E	F
HSPP2W0606C	6.5MAX	4.0±1.0	4.0±0.5	6.5MAX	0.5±0.1	
HSPP2W0807C	7.5MAX	5.0±1.0	5.0±0.5	8.3MAX	0.6±0.1	
HSPP2W1010C	10.5MAX	3.5±1.0	6.4±0.5	10.5MAX	0.65±0.05	
HSPP4W1010C	10.5MAX	10.5MAX	3.5±1.0	4.0±0.5	5.0±0.5	0.65±0.1

SHENZHEN HIGHSTARTECH ELECTRONICS CO., LTD

HSPP SERIES

5. ELECTRICAL CHARACTERISTICS:

HSPP2W0606C SERIES

Part Number	Stamp	Inductance(uH)	Test Frequency	DCR(max ohm)	Rated Current(mA) max
HSPP2W0606C-2R7M-LF	2R7	2.7+/-20%	7.96MHz	42m	2420
HSPP2W0606C-3R3M-LF	3R3	3.3+/-20%	7.96MHz	47m	2130
HSPP2W0606C-3R9M-LF	3R9	3.9+/-20%	7.96MHz	50m	2000
HSPP2W0606C-4R7M-LF	4R7	4.7+/-20%	7.96MHz	56m	1900
HSPP2W0606C-5R6M-LF	5R6	5.6+/-20%	7.96MHz	62m	1810
HSPP2W0606C-6R8M-LF	6R8	6.8+/-20%	7.96MHz	66m	1620
HSPP2W0606C-8R2M-LF	8R2	8.2+/-20%	7.96MHz	71m	1470
HSPP2W0606C-100L-LF	100	10+/-15%	2.52MHz	81m	1330
HSPP2W0606C-120L-LF	120	12+/-15%	2.52MHz	91m	1180
HSPP2W0606C-150L-LF	150	15+/-15%	2.52MHz	104m	1120
HSPP2W0606C-180L-LF	180	18+/-15%	2.52MHz	116m	1000
HSPP2W0606C-220L-LF	220	22+/-15%	2.52MHz	130m	960
HSPP2W0606C-270L-LF	270	27+/-15%	2.52MHz	180m	870
HSPP2W0606C-330L-LF	330	33+/-15%	2.52MHz	210m	780
HSPP2W0606C-390L-LF	390	39+/-15%	2.52MHz	260m	720
HSPP2W0606C-470L-LF	470	47+/-15%	2.52MHz	290m	660
HSPP2W0606C-560K-LF	560	56+/-10%	2.52MHz	330m	600
HSPP2W0606C-680K-LF	680	68+/-10%	2.52MHz	360m	550
HSPP2W0606C-820K-LF	820	82+/-10%	2.52MHz	390m	500
HSPP2W0606C-101K-LF	101	100+/-10%	1KHz	540m	450
HSPP2W0606C-121K-LF	121	120+/-10%	1KHz	620m	410
HSPP2W0606C-151K-LF	151	150+/-10%	1KHz	720m	370
HSPP2W0606C-181K-LF	181	180+/-10%	1KHz	880m	340
HSPP2W0606C-221K-LF	221	220+/-10%	1KHz	990m	300

SHENZHEN HIGHSTARTECH ELECTRONICS CO., LTD

HSP2 SERIES

HSP2W0606C-271K-LF	271	270+/-10%	1KHz	1520m	270
HSP2W0606C-331K-LF	331	330+/-10%	1KHz	1690m	250
HSP2W0606C-391K-LF	391	390+/-10%	1KHz	1850m	230
HSP2W0606C-471K-LF	471	470+/-10%	1KHz	2850m	210
HSP2W0606C-561K-LF	561	560+/-10%	1KHz	3210m	190
HSP2W0606C-681K-LF	681	680+/-10%	1KHz	3600m	170
HSP2W0606C-821K-LF	821	820+/-10%	1KHz	4870m	160
HSP2W0606C-102K-LF	102	1000+/-10%	1KHz	5560m	140

HSP2W0807C SERIES

Part Number	Stamp	Inductance(uH)	Test Frequency	DCR(max ohm)	Rated Current(mA) max
HSP2W0807C-1R2L-LF	1R2L	1.2+/-15%	25.2MHz	18m	4140
HSP2W0807C-1R7L-LF	1R7L	1.7+/-15%	25.2MHz	22m	3750
HSP2W0807C-2R3L-LF	2R3L	2.3+/-15%	25.2MHz	25m	3450
HSP2W0807C-3R0L-LF	3R0L	3.0+/-15%	25.2MHz	28m	3250
HSP2W0807C-3R9L-LF	3R9L	3.9+/-15%	25.2MHz	31m	3080
HSP2W0807C-4R7L-LF	4R7L	4.7+/-15%	25.2MHz	35m	2940
HSP2W0807C-5R6L-LF	5R6L	5.6+/-15%	25.2MHz	39m	2820
HSP2W0807C-7R0L-LF	7R0L	7.0+/-15%	25.2MHz	43m	2680
HSP2W0807C-8R2L-LF	8R2L	8.2+/-15%	25.2MHz	47m	2550
HSP2W0807C-100L-LF	100L	10+/-15%	25.2MHz	50m	2400
HSP2W0807C-120L-LF	120L	12+/-15%	25.2MHz	54m	2250
HSP2W0807C-150L-LF	150L	15+/-15%	25.2MHz	62m	1950
HSP2W0807C-180L-LF	180L	18+/-15%	25.2MHz	71m	1780
HSP2W0807C-220L-LF	220L	22+/-15%	25.2MHz	80m	1600
HSP2W0807C-270L-LF	270L	27+/-15%	25.2MHz	100m	1400

SHENZHEN HIGHSTARTECH ELECTRONICS CO., LTD

HSPP SERIES

HSPP2W0807C-330L-LF	330L	33+/-15%	25.2MHz	140m	1300
HSPP2W0807C-390L-LF	390L	39+/-15%	25.2MHz	150m	1200
HSPP2W0807C-470L-LF	470L	47+/-15%	25.2MHz	170m	1100
HSPP2W0807C-560L-LF	560L	56+/-15%	25.2MHz	190m	990
HSPP2W0807C-680L-LF	680L	68+/-15%	25.2MHz	210m	890
HSPP2W0807C-820L-LF	820L	82+/-15%	25.2MHz	270m	810
HSPP2W0807C-101L-LF	101L	100+/-15%	1KHz	320m	740
HSPP2W0807C-121L-LF	121L	120+/-15%	1KHz	360m	670
HSPP2W0807C-151L-LF	151L	150+/-15%	1KHz	510m	600
HSPP2W0807C-181L-LF	181L	180+/-15%	1KHz	570m	550
HSPP2W0807C-221L-LF	221L	220+/-15%	1KHz	760m	500
HSPP2W0807C-271L-LF	271L	270+/-15%	1KHz	860m	450
HSPP2W0807C-331L-LF	331L	330+/-15%	1KHz	970m	410
HSPP2W0807C-391L-LF	391L	390+/-15%	1KHz	1280m	370
HSPP2W0807C-471L-LF	471L	470+/-15%	1KHz	1440m	340
HSPP2W0807C-561L-LF	561L	560+/-15%	1KHz	1610m	310
HSPP2W0807C-681L-LF	681L	680+/-15%	1KHz	2070m	280
HSPP2W0807C-821L-LF	821L	820+/-15%	1KHz	2330m	260
HSPP2W0807C-102L-LF	102L	1000+/-15%	1KHz	2720m	230
HSPP2W0807C-122L-LF	122L	1200+/-15%	1KHz	3980m	210
HSPP2W0807C-152L-LF	152L	1500+/-15%	1KHz	4500m	190
HSPP2W0807C-182L-LF	182L	1800+/-15%	1KHz	6810m	170
HSPP2W0807C-222L-LF	222L	2200+/-15%	1KHz	7560m	160
HSPP2W0807C-272L-LF	272L	2700+/-15%	1KHz	8540m	140
HSPP2W0807C-332L-LF	332L	3300+/-15%	1KHz	9740m	130
HSPP2W0807C-392L-LF	392L	3900+/-15%	1KHz	12900m	120

SHENZHEN HIGHSTARTECH ELECTRONICS CO., LTD

HSPB SERIES

HSPB2W0807C-472L-LF	472L	4700+/-15%	1KHz	14700m	110
HSPB2W0807C-562L-LF	562L	5600+/-15%	1KHz	20400m	99
HSPB2W0807C-682L-LF	682L	6800+/-15%	1KHz	23000m	89
HSPB2W0807C-822L-LF	822L	8200+/-15%	1KHz	30600m	81

HSPB2W1010C SERIES

Part Number	Stamp	Inductance(uH)	Test Frequency	DCR(max ohm)	Rated Current(mA) max
HSPB2W1010C-100M-LF	100M	10+/-20%	100KHz	25.1m	4.8
HSPB2W1010C-120M-LF	120M	12+/-20%	100KHz	26.6m	4.5
HSPB2W1010C-150M-LF	150M	15+/-20%	100KHz	31.3m	4
HSPB2W1010C-180M-LF	180M	18+/-20%	100KHz	33.8m	3.8
HSPB2W1010C-220M-LF	220M	22+/-20%	100KHz	38.3m	3.4
HSPB2W1010C-270M-LF	270M	27+/-20%	100KHz	40.9m	3
HSPB2W1010C-330M-LF	330M	33+/-20%	100KHz	53.8m	2.7
HSPB2W1010C-390M-LF	390M	39+/-20%	100KHz	73.4m	2.5
HSPB2W1010C-470M-LF	470M	47+/-20%	100KHz	102.1m	2.2
HSPB2W1010C-560M-LF	560M	56+/-20%	100KHz	111.3m	2.1
HSPB2W1010C-680M-LF	680M	68+/-20%	100KHz	137.5m	1.8
HSPB2W1010C-820M-LF	820M	82+/-20%	100KHz	160.0m	1.7
HSPB2W1010C-101M-LF	101M	100+/-20%	100KHz	175.3m	1.5
HSPB2W1010C-121M-LF	121M	120+/-20%	100KHz	193.8m	1.4
HSPB2W1010C-151M-LF	151M	150+/-20%	100KHz	225.6m	1.2
HSPB2W1010C-181M-LF	181M	180+/-20%	100KHz	275.3m	1.1
HSPB2W1010C-221M-LF	221M	220+/-20%	100KHz	313.0m	1
HSPB2W1010C-271M-LF	271M	270+/-20%	100KHz	450.6m	0.95
HSPB2W1010C-331M-LF	331M	330+/-20%	100KHz	500.6m	0.88

SHENZHEN HIGHSTARTECH ELECTRONICS CO., LTD

HSP2 SERIES

HSP2W1010C-391M-LF	391M	390+/-20%	100KHz	563.0m	0.78
HSP2W1010C-471M-LF	471M	470+/-20%	100KHz	748.8m	0.72
HSP2W1010C-561M-LF	561M	560+/-20%	100KHz	848.8m	0.68
HSP2W1010C-681M-LF	681M	680+/-20%	100KHz	1202m	0.6
HSP2W1010C-821M-LF	821M	820+/-20%	100KHz	1342m	0.57
HSP2W1010C-102M-LF	102M	1000+/-20%	100KHz	1490m	0.48

HSP4W1010C SERIES

Part Number	Stamp	Inductance(uH)	Test Frequency	DCR(max ohm)	Rated Current(mA) max
HSP4W1010C-100M-LF	100M	10+/-20%	1KHz	0.023	3.51
HSP4W1010C-120M-LF	120M	12+/-20%	1KHz	0.024	3.24
HSP4W1010C-150M-LF	150M	15+/-20%	1KHz	0.036	2.88
HSP4W1010C-180M-LF	180M	18+/-20%	1KHz	0.039	2.61
HSP4W1010C-220M-LF	220M	22+/-20%	1KHz	0.042	2.34
HSP4W1010C-270M-LF	270M	27+/-20%	1KHz	0.045	2.16
HSP4W1010C-330L-LF	330L	33+/-15%	1KHz	0.057	1.89
HSP4W1010C-390L-LF	390L	39+/-15%	1KHz	0.076	1.8
HSP4W1010C-470L-LF	470L	47+/-15%	1KHz	0.1	1.62
HSP4W1010C-560L-LF	560L	56+/-15%	1KHz	0.11	1.44
HSP4W1010C-680L-LF	680L	68+/-15%	1KHz	0.15	1.35
HSP4W1010C-820L-LF	820L	82+/-15%	1KHz	0.16	1.26
HSP4W1010C-101L-LF	101L	100+/-15%	1KHz	0.19	1.08
HSP4W1010C-121L-LF	121L	120+/-15%	1KHz	0.21	0.99
HSP4W1010C-151L-LF	151L	150+/-15%	1KHz	0.23	0.9
HSP4W1010C-181L-LF	181L	180+/-15%	1KHz	0.26	0.82
HSP4W1010C-221L-LF	221L	220+/-15%	1KHz	0.29	0.74

SHENZHEN HIGHSTARTECH ELECTRONICS CO., LTD

HSPD SERIES

HSPD4W1010C-271L-LF	271L	270+/-15%	1KHz	0.36	0.67
HSPD4W1010C-331L-LF	331L	330+/-15%	1KHz	0.51	0.61
HSPD4W1010C-391L-LF	391L	390+/-15%	1KHz	0.69	0.55
HSPD4W1010C-471L-LF	471L	470+/-15%	1KHz	0.98	0.51
HSPD4W1010C-561L-LF	561L	560+/-15%	1KHz	1.1	0.46
HSPD4W1010C-681L-LF	681L	680+/-15%	1KHz	1.2	0.42
HSPD4W1010C-821L-LF	821L	820+/-15%	1KHz	1.3	0.38
HSPD4W1010C-102L-LF	102L	1000+/-15%	1KHz	1.5	0.35