

SHENZHEN HIGHSTARTECH ELECTRONICS CO., LTD

Single Winding Choke

1. FEATURES:

- (1) Cost effective design.
- (2) Low volume are wounded by hand , high volume are wounded by automatic machine.
- (3) 130 degree or 155 degree or 180 degree UEW-NY/PEW/EIW wire.
- (4) High saturation current
- (5) Customer's specifications are welcome.

2. APPLICATIONS:

- (1) Power supplies, switching circuit.
- (2) SCR and Triac Controls, output chokes.
- (3) EMI/RFI/PFC chokes..
- (4) Other filters.

3. PART NUMBER SYSTEM:

HSTC - 101M - 2A - 5026 - F

(1) (2)(3) (4) (5) (6)

- (1) Type: Toroidal coils; HSTB is with base; HSTBV is vertical configuration; HSTBH is horizontal configuration.
- (2) Inductance, e.g. 101 is for 100uH.
- (3) Inductance tolerance, K:±10%; M:±20%.
- (4) Rated current, e.g. 2A
- (5) Core style, OD=0.5" (12.7mm), "26" is material.
- (6) Shape.

SHENZHEN HIGHSTARTECH ELECTRONICS CO., LTD

Single Winding Choke

4. PHYSICAL CHARACTERISTICS AND ELECTRICAL CHARACTERISTICS:

HSTC/HSTB TYPE

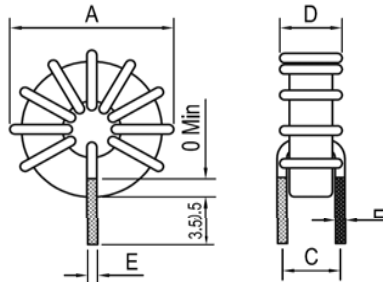


Figure 1 (standard type)

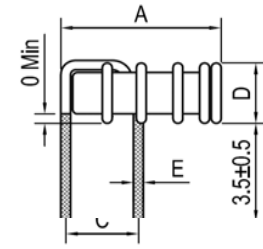


Figure 3 (standard F type)

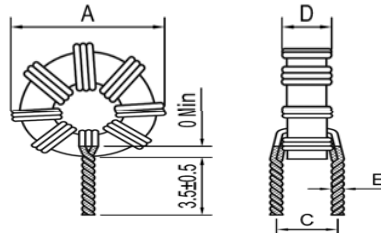


Figure 2 (multiwire type)

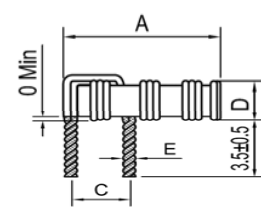


Figure 4 (multiwire F type)

Part Number	L	DCR	Rated	Dimension(mm)				
	Idc=0A	mohm	Current	A	C	D	E	Fig
	uH	MAX	(A) MAX	MAX	±1	MAX		
HSTC-R82M-10A-3018	0.82	4.2	10	10.5	5.5	6.0	1.0+/-0.2	2
HSTC-R60M-14A-3818	0.6	2.2	14	13	7.0	7.5	1.4+/-0.2	2
HSTC-1R0M-10A-3818	1.0	3.3	10	14.0	7.0	8.0	1.4+/-0.2	2
HSTC-1R2M-14A-4453	1.2	3.0	14.0	15.5	5.5	8.0	1.1+/-0.2	1
HSTC-2R2M-10A-4453	2.2	4.0	10.0	15.5	5.5	8.0	1.0+/-0.1	1
HSTC-R60M-25A-5018	0.6	1.4	25.0	16.5	7.5	8.0	1.6+/-0.3	2
HSTC-1R2M-18A-5018	1.2	1.9	18.0	16.5	9.0	11.5	1.9+/-0.3	2
HSTC-1R5M-10A-5052B	1.5	2.6	10.0	17.5	8.0	10.0	1.2+/-0.1	1
HSTC-1R6M-18A-5053B	1.6	3.0	18.0	17.5	9.0	10.5	1.9+/-0.3	2
HSTC-1R2M-20A-6018	1.2	2.1	20.0	19.0	6.5	9.5	1.7+/-0.3	4
HSTC-1R2M-25A-6053	1.2	1.9	25.0	19.0	9.0	9.5	1.9+/-0.3	2
HSTC-2R2M-15A-6018	2.2	2.7	15.0	19.0	8.5	9.0	1.8+/-0.3	2
HSTC-3R0M-10A-6052	3.0	4.0	10.0	21.0	5.5	10.0	2.2+/-0.2	4

1. Inductance testing condition: 10K/0.25V

2. Rated current: temperature rise to 40 degree and the initial inductance drops by 20%

3. Customer's specifications are welcome.

SHENZHEN HIGHSTARTECH ELECTRONICS CO., LTD

Single Winding Choke

Part Number	L(uH) at 1KHz		DCR	Rated	Dimension(mm)		Weight	
	at 0A	at Idc	mohm	Current	A	D	g	
	uH	uH	MAX	(A) REF	MAX	MAX	REF	
HSTC-5R0M-0.5A-2026	5	4.9	7	0.5	7.5	4.5	0.4	
HSTC-9R0M-0.3A-2026	9	8.8	110	0.3	8	4.5	0.3	
HSTC-150M-0.5A-2026	15.0	13.5	70	0.5	7.5	4.5	0.4	
HSTC-200M-0.2A-2026	20.0	19.8	198.0	0.2	7.5	4.0	0.2	
HSTC-270M-0.1A-2026	27.0	27.0	33.0	0.1	7.5	4.0	0.2	
HSTC-270M-0.3A-2026	27.0	25.5	135.0	0.3	7.5	4.0	0.3	
HSTC-100M-2A-3026	10.0	7.7	17.0	2.0	11.0	6.5	1.6	
HSTC-120M-1A-3026	12.0	10.7	40.0	1.0	10.5	6.0	1.2	
HSTC-320M-1A-3026	32.0	25.0	58.0	1.0	10.5	6.0	1.4	
HSTC-370M-0.5A-3026	37.0	33.7	134.0	0.5	10.0	5.5	1.0	
HSTC-141M-0.5A-3026	140.0	107.0	265.0	0.5	10.0	6.0	1.2	
HSTC-8R2M-2A-3726	8.2	7.2	17.0	2.0	12.5	6.0	2.0	
HSTC-220M-2A-3726	22.0	17.0	30.0	2.0	14.5	7.5	2.4	
HSTC-240M-1A-3726	24.0	22.0	46.0	1.0	12.0	5.5	1.6	
HSTC-560M-0.5A-3726	56.0	53.0	181.0	0.5	12.5	5.5	1.4	
HSTC-680M-1A-3726	68.0	53.0	90.0	1.0	12.0	6.0	2.0	
HSTC-241M-0.5A-3726	240.0	190.0	39.0	0.5	12.0	6.0	1.6	
HSTC-150M-2A-4426	15.0	12.6	23.0	2.0	14.0	7.0	2.8	
HSTC-430M-1A-4426	43.0	37.0	74.0	1.0	14.0	6.5	2.6	
HSTC-680M-2A-4426	68.0	42.0	45.0	2.0	14.5	8.0	3.8	
HSTC-111M-0.5A-4426	110.0	100.0	250.0	0.5	14.0	6.5	2.4	
HSTC-141M-1A-4426	140.0	104.0	140.0	1.0	14.0	7.5	3.2	

SHENZHEN HIGHSTARTECH ELECTRONICS CO., LTD

Single Winding Choke

HSTC-361M-0.5A-4426	360.0	285.0	45.0	0.5	14.0	6.5	2.8	
HSTC-200M-3A-5026	20.0	15.0	21.0	3.0	16.5	9.0	4.4	
HSTC-300M-2A-5026	30.0	25.0	35.0	2.0	16.0	8.0	4.0	
HSTC-600M-3A-5026	60.0	35.0	38.0	3.0	17.0	9.0	5.8	
HSTC-680M-1A-5026	68.0	60.0	101.0	1.0	16.0	7.5	3.6	
HSTC-101M-2A-5026	100.0	63.0	80.0	2.0	16.0	9.0	5.2	
HSTC-221M-1A-5026	220.0	162.0	170.0	1.0	16.5	8.0	4.4	
HSTC-220M-5A-6026	22.0	15.0	13.0	5.0	21.0	10.5	8.0	
HSTC-290M-4A-6026	29.0	20.0	20.0	4.0	19.0	9.0	7.8	
HSTC-350M-3A-6026	35.0	28.0	35.0	3.0	20.5	10.5	7.6	
HSTC-580M-2A-6026	58.0	45.0	50.0	2.0	19.0	10.0	7.2	
HSTC-900M-3A-6026	90.0	52.5	44.0	3.0	20.5	12.5	9.2	
HSTC-111M-2A-6026	110.0	79.0	69.0	2.0	18.5	10.0	8.0	
HSTC-131M-1A-6026	130.0	116.0	180.0	1.0	19.0	9.0	6.4	
HSTC-471M-1A-6026	470.0	310.0	350.0	1.0	19.5	10.0	7.6	
HSTC-250M-5A-6826	25.0	18.0	16.0	5.0	22.0	9.0	9.2	
HSTC-320M-4A-6826	32.0	24.0	21.0	4.0	22.0	9.0	9.0	
HSTC-430M-3A-6826	43.0	30.0	28.0	3.0	21.0	8.5	8.8	
HSTC-650M-4A-6826	65.0	55.0	55.0	2.0	22.0	9.0	8.2	
HSTC-111M-4A-6826	110.0	56.0	42.0	4.0	23.0	11.0	11.4	
HSTC-131M-3A-6826	130.0	77.0	55.0	3.0	23.0	10.5	10.6	
HSTC-151M-1A-6826	150.0	137.0	160.0	1.0	21.5	9.0	7.6	
HSTC-231M-2A-6826	230.0	148.0	108.0	2.0	22.5	9.5	9.8	
HSTC-501M-1A-6826	500.0	355.0	300.0	1.0	22.0	9.0	8.6	
HSTC-500M-5A-8026	50.0	33.0	22.0	5.0	24.5	10.0	14.2	
HSTC-600M-4A-8026	60.0	42.0	30.0	4.0	25.0	11.0	13.7	
HSTC-750M-3A-8026	75.0	54.0	39.0	3.0	24.0	11.0	13.0	

SHENZHEN HIGHSTARTECH ELECTRONICS CO., LTD

Single Winding Choke

HSTC-820M-3A-8026	82.0	60.0	42.0	3.0	24.0	10.5	13.0	
HSTC-101M-5A-8026	100.0	53.0	33.0	5.0	25.0	11.5	16.8	
HSTC-111M-2A-8026	110.0	90.0	74.0	2.0	25.5	10.0	12.0	
HSTC-151M-5A-8026	150.0	68.0	42.0	5.0	25.0	13.0	18.0	
HSTC-221M-4A-8026	220.0	105.0	59.0	4.0	26.0	13.0	17.9	
HSTC-271M-3A-8026	270.0	140.0	100.0	3.0	27.0	11.5	16.6	
HSTC-321M-2A-8026	320.0	193.0	131.0	2.0	27.0	11.0	14.0	
HSTC-431M-2A-8026	430.0	246.0	145.0	2.0	26.0	11.0	15.0	
HSTC-961M-1A-8026	960.0	625.0	450.0	1.0	26.0	11.0	13.0	
HSTC-900M-5A-9026	90.0	54.0	34.0	5.0	28.0	14.5	23.6	
HSTC-141M-3A-9026	140.0	98.0	82.0	3.0	29.0	13.0	22.0	
HSTC-201M-2A-9026	200.0	154.0	114.0	2.0	28.5	13.0	20.8	
HSTC-321M-5A-9026	320.0	120.0	68.0	5.0	29.0	16.0	29.6	
HSTC-451M-2A-9026	450.0	280.0	174.0	2.0	29.0	14.0	23.0	
HSTC-471M-1A-9026	470.0	398.0	354.0	1.0	26.5	13.0	19.5	
HSTC-471M-3A-9026	470.0	225.0	150.0	3.0	29.5	14.0	27.0	
HSTC-182M-1A-9026	1800.0	1130.0	680.0	1.0	27.5	14.0	22.4	
HSTC-820M-5A-9426	82.0	52.0	33.0	5.0	31.0	15.5	22.4	
HSTC-101M-4A-9426	100.0	69.0	42.0	4.0	29.5	13.5	21.9	
HSTC-131M-3A-9426	130.0	96.0	61.0	3.0	29.0	13.0	21.6	
HSTC-221M-2A-9426	220.0	170.0	121.0	2.0	28.5	12.0	20.6	
HSTC-301M-5A-9426	300.0	120.0	64.0	5.0	30.0	15.5	28.8	
HSTC-391M-4A-9426	390.0	165.0	88.0	4.0	29.5	15.0	27.2	
HSTC-471M-1A-9426	470.0	400.0	342.0	1.0	27.5	11.5	19.0	
HSTC-501M-3A-9426	500.0	242.0	124.0	3.0	31.0	14.5	26.0	
HSTC-781M-2A-9426	780.0	428.0	220.0	2.0	30.0	13.5	24.1	

SHENZHEN HIGHSTARTECH ELECTRONICS CO., LTD

Single Winding Choke

HSTC-132M-1A-9426	1300.0	933.0	585.0	1.0	28.5	12.5	21.2	
HSTC-300M-10A-10626	30.0	21.0	9.0	10.0	36.0	19.5	42.0	
HSTC-350M-10A-10626	35.0	25.0	10.0	10.0	36.0	19.5	43.0	
HSTC-560M-7A-10626	56.0	41.5	20.0	7.0	34.0	18.0	40.0	
HSTC-680M-7A-10626	68.0	46.0	21.0	7.0	34.0	18.0	40.0	
HSTC-820M-7A-10626	82.0	53.0	23.0	7.0	34.0	18.0	41.0	
HSTC-101M-5A-10626	100.0	75.0	36.0	5.0	33.5	17.0	39.0	
HSTC-151M-4A-10626	150.0	110.0	53.0	4.0	32.5	16.5	38.4	
HSTC-201M-3A-10626	200.0	157.0	78.0	3.0	34.0	15.0	37.8	
HSTC-301M-2A-10626	300.0	250.0	150.0	2.0	34.0	15.0	37.8	
HSTC-851M-2A-10626	850.0	567.0	300.0	2.0	35.0	16.5	41.8	
HSTC-750M-10A-13026	75.0	43.0	14.0	10.0	42.0	19.5	64.0	
HSTC-131M-7A-13026	130.0	79.0	31.0	7.0	41.0	18.0	58.0	
HSTC-201M-5A-13026	200.0	134.0	56.0	5.0	39.0	17.0	55.6	
HSTC-251M-10A-13026	250.0	105.0	27.0	10.0	42.5	21.5	82.0	
HSTC-471M-7A-13026	470.0	190.0	64.0	7.0	40.5	19.5	72.0	
HSTC-681M-5A-13026	680.0	295.0	105.0	5.0	39.0	18.5	65.2	

SHENZHEN HIGHSTARTECH ELECTRONICS CO., LTD

Single Winding Choke

HSTBV/HSTBKM/HSTBH TYPE

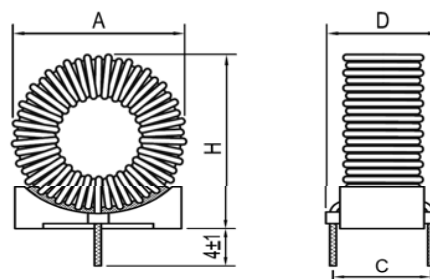


Figure:1 (TBV type, Use plastic or FR4 board base)

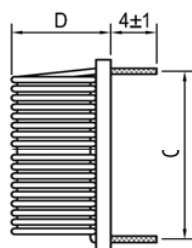
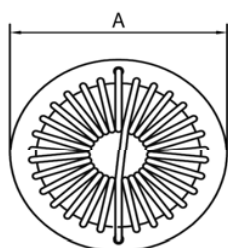


Figure:3 (TBH type, Use FR4 board base)

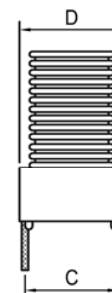
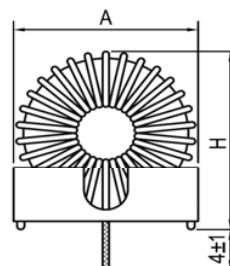


Figure:2 (TBKM type, Use KM series base)

Part Number	L(uH) at 1KHz		DCR	Rated	Dimension(mm)			
	at 0A	at Idc	mohm	Current	A	C	D	H
	uH	uH	MAX	(A) MAX	MAX	±0.5	MAX	MAX
HSTBV-3R3M-2A-3826	3.3	3.1	10	2.0	13.0	6.0	8.0	14.0
HSTBV-5R0M-2A-3826	5.0	4.8	11	2.0	13.0	6.0	8.0	14.0
HSTBV-200M-3A-6826	20.0	17.5	26	3.0	22.0	10.0	12.5	24.0
HSTBV-101M-3A-6826	100.0	56.0	60	3.0	22.0	10.0	12.5	24.0
HSTBKM-150M-2A-4426	15.0	12.6	23.0	2.0	15.0	5.6	9.0	18
HSTBKM-680M-2A-4426	68.0	42.0	56.0	2.0	15.0	5.6	9.0	18
HSTBKM-600M-3A-5026B	60.0	41.0	38.0	3.0	17.0	7.6	11.8	20
HSTBKM-101M-2A-5026B	100.0	71.0	81.0	2.0	17.0	7.6	11.8	20
HSTBKM-470M-3A-6826A	47.0	36.0	30.0	3.0	21.5	7.6	11.8	24.5
HSTBKM-111M-4A-6826A	110.0	46.0	42.0	5.0	21.5	7.6	11.8	24.5
HSTBKM-680M-7A-8026B	68.0	33.0	35.0	5.0	24.5	11.4	15.5	27.5
HSTBKM-101M-4A-8026B	100.0	70.0	39.0	4.0	24.5	11.4	15.5	27.5
HSTBKM-101M-5A-10626	100.0	75.0	36.0	5.0	32.0	12.7	18.2	35
HSTBH-471M-3A-9026	470.0	233.0	150.0	3.0	31.0	27.0	16.5	