

SHENZHEN HIGHSTARTECH ELECTRONICS CO., LTD

HSWC SERIES

1. FEATURES:

(1) Small and thin size, high inductance.

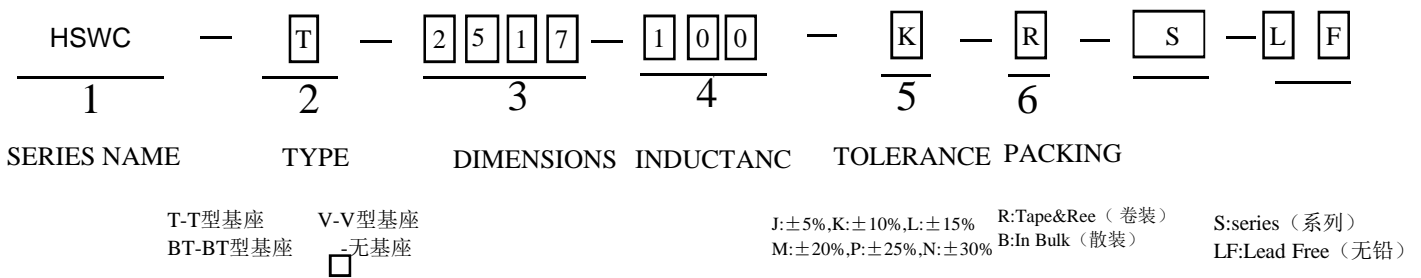
2. APPLICATIONS:

(1) Watches, Toys, Digital camera.

(2) Electronic thermimeters.

(3) PHS, Portable telephones, etc.

3. PART NUMBER SYSTEM:

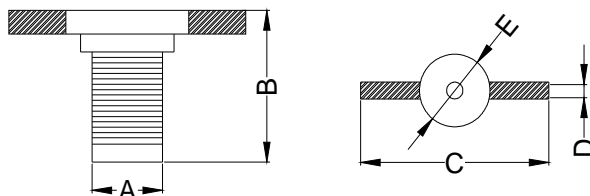


SHENZHEN HIGHSTARTECH ELECTRONICS CO., LTD

HSWC SERIES

4 . PHYSICAL CHARACTERISTICS AND ELECTRICAL CHARACTERISTICS:

HS-WCT SERIES

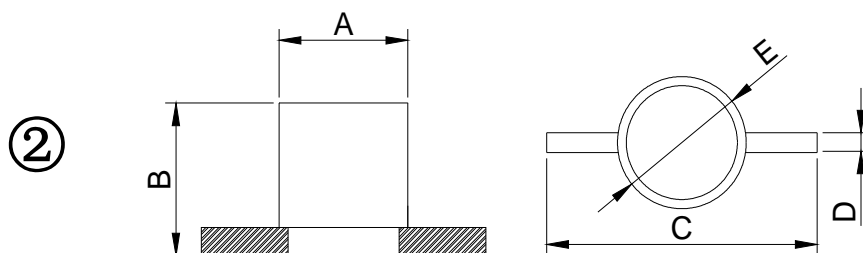


Part Number	Dimensions (mm)					Inductance
	A	B	C	D	E	
HS-WCT-2517	2.5±0.3	1.9±0.5	5.5±0.3	1.0±0.2	2.5±0.3	20 μ H-5mH
HS-WCT-2519	2.5±0.3	2.4±0.3	5.5±0.3	1.0±0.2	2.5±0.3	20 μ H-8mH
HS-WCT-2817	2.8±0.3	1.9±0.5	6.5±0.3	1.0±0.2	3.2±0.2	20 μ H-8mH
HS-WCT-3017	3.0±0.3	1.9±0.5	6.5±0.3	1.0±0.2	3.2±0.2	20 μ H-10mH
HS-WCT-3519	3.5±0.3	2.4±0.3	6.5±0.3	1.0±0.2	3.5±0.3	20 μ H-16mH
HS-WCT-4014	4.0±0.3	1.6±0.3	5.5±0.3	1.0±0.2	4.0±0.3	20 μ H-15mH
HS-WCT-4019	4.0±0.3	2.4±0.3	6.5±0.3	1.0±0.2	4.0±0.3	20 μ H-18mH
HS-WCT-4519	4.5±0.3	2.4±0.3	7.0±0.3	1.0±0.2	4.5±0.3	20 μ H-22mH

SHENZHEN HIGHSTARTECH ELECTRONICS CO., LTD

HSWC SERIES

HS-WCT SERIES



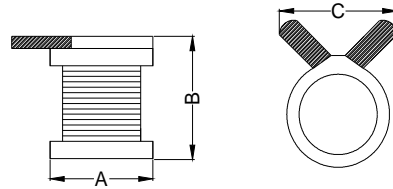
Part Number	Dimensions (mm)					Inductance
	A	B	C	D	E	
HS-WCT-3317	3.3±0.3	2.1±0.5	5.5±0.3	1.0±0.2	3.3±0.3	0.5mH-17mH
HS-WCT-3320	3.3±0.3	2.4±0.3	5.5±0.3	1.0±0.2	3.3±0.3	0.5mH-25mH
HS-WCT-3820	3.8±0.3	2.4±0.3	5.5±0.3	1.0±0.2	3.8±0.3	0.5mH-35mH
HS-WCT-4010	4.0±0.3	1.5max	5.5±0.3	1.0±0.2	4.0±0.3	0.5mH-5mH
HS-WCT-4016	4.0±0.3	2.0max	5.5±0.3	1.0±0.2	4.0±0.3	0.5mH-20mH
HS-WCT-4520	4.5±0.3	2.4±0.3	6.5±0.3	1.0±0.2	4.5±0.3	0.5mH-45mH
HS-WCT-4928	4.9±0.3	3.2±0.3	6.5±0.3	1.0±0.2	4.9±0.3	0.5mH-60mH
HS-WCT-4931	4.9±0.3	3.5±0.3	7.0±0.3	1.0±0.2	4.9±0.3	0.5mH-70mH

SHENZHEN HIGHSTARTECH ELECTRONICS CO., LTD

HSWC SERIES

HS-WCV SERIES

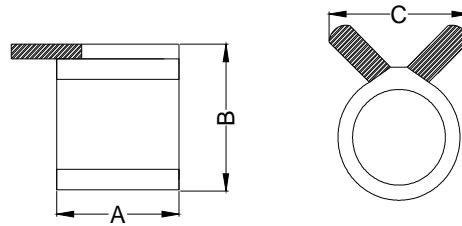
③



Part Number	Dimensions (mm)			Inductance
	A	B	C	
HS-WCV-2517	2.5±0.3	1.9±0.5	4.1±0.3	20 μ H-5mH
HS-WCV-2519	2.5±0.3	2.1±0.5	4.1±0.3	20 μ H-8mH
HS-WCV-2817	2.8±0.3	1.9±0.5	4.1±0.3	20 μ H-8mH
HS-WCV-3017	3.0±0.3	1.9±0.3	4.1±0.3	20 μ H-10mH
HS-WCV-3519	3.5±0.3	2.4±0.3	4.1±0.3	20 μ H-16mH
HS-WCV-4014	4.0±0.3	1.6±0.3	4.1±0.3	20 μ H-15mH
HS-WCV-4019	4.0±0.3	2.4±0.3	4.1±0.3	20 μ H-18mH
HS-WCV-4519	4.5±0.3	2.4±0.3	4.1±0.3	20 μ H-22mH

SHENZHEN HIGHSTARTECH ELECTRONICS CO., LTD

HSWC SERIES



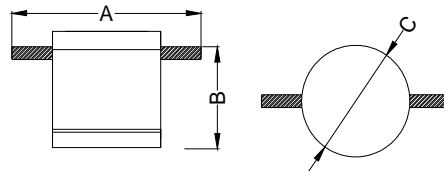
HS-WCV SERIES

④

Part Number	Dimensions (mm)			Inductance
	A	B	C	
HS-WCV-3317	3.3±0.3	1.9±0.3	3.7±0.3	0.5mH-17mH
HS-WCV-3320	3.3±0.3	2.4±0.3	3.7±0.3	0.5mH-25mH
HS-WCV-3820	3.8±0.3	2.4±0.3	3.7±0.3	0.5mH-35mH
HS-WCV-4010	4.0±0.3	1.5max	3.7±0.3	0.5mH-5mH
HS-WCV-4016	4.0±0.3	1.6±0.3	3.7±0.3	0.5mH-20mH
HS-WCV-4520	4.5±0.3	2.4±0.3	4.1±0.3	0.5mH-45mH
HS-WCV-4928	4.9±0.3	3.2±0.3	4.1±0.3	0.5mH-60mH
HS-WCV-4931	4.9±0.3	3.5±0.3	4.1±0.3	0.5mH-70mH

HS-WCBT SERIES

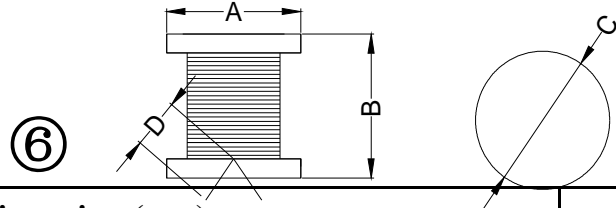
⑤



Part Number	Dimensions (mm)			Inductance
	A	B	C	
WCBT-3322	5.5±0.3	2.0±0.2	3.3±0.3	10mH-40mH
WCBT-4520	7.0±0.3	2.0±0.3	4.5±0.3	20mH-200mH

SHENZHEN HIGHSTARTECH ELECTRONICS CO., LTD

HSWC SERIES



HS-WC SERIES

Part Number	Dimensions(mm)				Inductance
	A	B	C	D	
HS-WC-2517	2.5±0.3	1.7±0.3	2.5±0.3	6~12	20 μ H-5mH
HS-WC-2519	2.5±0.3	1.9±0.3	2.5±0.3	6~12	20 μ H-5mH
HS-WC-2817	2.8±0.3	1.7±0.3	2.8±0.3	6~12	20 μ H-6mH
HS-WC-2820	2.8±0.3	2.0±0.3	2.8±0.3	6~12	20 μ H-6.5mH
HS-WC-3017	3.0±0.3	1.7±0.3	3.0±0.3	6~12	20 μ H-6.5mH
HS-WC-3519	3.5±0.3	1.9±0.3	3.5±0.3	6~12	20 μ H-10mH
HS-WC-4019	4.0±0.3	1.9±0.3	4.0±0.3	6~12	20 μ H-13mH
HS-WC-4519	4.5±0.3	1.9±0.3	4.5±0.3	6~12	20 μ H-18mH
HS-WC-3317	3.3±0.3	6~12	1.7±0.3	3.3±0.3	0.5mH-5mH
HS-WC-3320	3.3±0.3	6~12	2.0±0.3	3.3±0.3	0.5mH-25mH
HS-WC-3820	3.8±0.3	6~12	2.0±0.3	3.8±0.3	0.5mH-35mH
HS-WC-4010	4.0±0.3	6~12	1.0±0.3	4.0±0.3	0.5mH-5mH
HS-WC-4014	4.0±0.3	6~12	1.4±0.3	4.0±0.3	0.5mH-20mH
HS-WC-4520	4.5±0.3	6~12	2.0±0.3	4.5±0.3	0.5mH-45mH
HS-WC-4928	4.9±0.3	6~12	2.8±0.3	4.9±0.3	0.5mH-60mH
HS-WC-4931	4.9±0.3	6~12	3.1±0.3	4.9±0.3	0.5mH-70mH