

# SHENZHEN HIGHSTARTECH ELECTRONICS CO., LTD

## HSSFQ SERIES

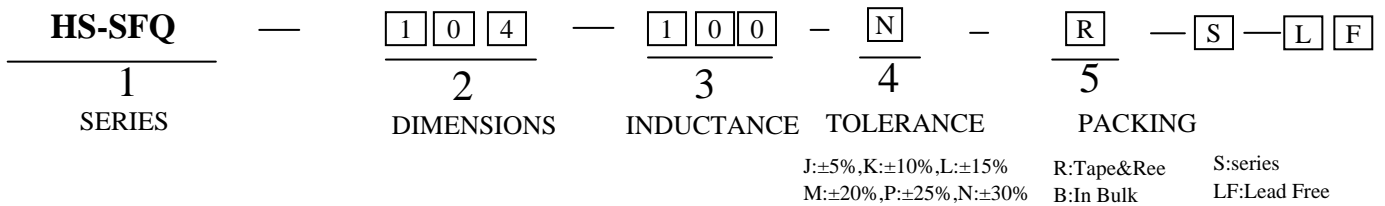
### 1. FEATURES:

(1) Various high power inductors are superior to be high saturation for surface mounting.

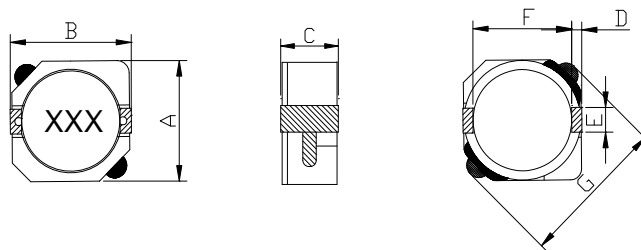
### 2. APPLICATIONS:

- (1) Power supply for VTR, OA equipment.
- (2) Digital camera, LCD television set.
- (3) Notebook PC, portable communication equipments.
- (4) DC/DC converters, etc.

### 3. PART NUMBER SYSTEM:



### 4. PHYSICAL CHARACTERISTICS:



UNIT: mm

| Type      | A (max) | B (max) | C (max) | D   | E   | F   | G    |
|-----------|---------|---------|---------|-----|-----|-----|------|
| HS-SFQ63  | 6.2     | 6.3     | 3       | 0.6 | 2.0 | 4.7 | 8.8  |
| HS-SFQ103 | 10.3    | 10.4    | 3       | 1.2 | 3.0 | 7.7 | 13.5 |
| HS-SFQ104 | 10.3    | 10.4    | 4       | 1.2 | 3.0 | 7.7 | 13.5 |
| HS-SFQ105 | 10.3    | 10.4    | 5       | 1.2 | 3.0 | 7.7 | 13.5 |

# SHENZHEN HIGHSTARTECH ELECTRONICS CO., LTD

## HSSFQ SERIES

### 5. ELECTRICAL CHARACTERISTICS:

#### HS-SFQ63 SERIES

| Part Number   | Inductance<br>( $\mu$ H) | DCR(max)<br>( $\Omega$ ) | IDC(A) (max)<br>L/L=-35%; $\Delta$ t=40°C | Test Freq. |
|---------------|--------------------------|--------------------------|---|------------|
| HS-SFQ63-2R5N | 2.5                      | 0.018                    | 2.60                                      | 100KHz     |
| HS-SFQ63-3R3N | 3.3                      | 0.020                    | 2.30                                      | 100KHz     |
| HS-SFQ63-4R0N | 4.0                      | 0.027                    | 2.10                                      | 100KHz     |
| HS-SFQ63-5R0N | 5.0                      | 0.031                    | 1.85                                      | 100KHz     |
| HS-SFQ63-6R0N | 6.0                      | 0.042                    | 1.70                                      | 100KHz     |
| HS-SFQ63-8R0N | 8.0                      | 0.050                    | 1.50                                      | 100KHz     |
| HS-SFQ63-100N | 10.0                     | 0.054                    | 1.30                                      | 100KHz     |
| HS-SFQ63-120N | 12                       | 0.072                    | 1.20                                      | 100KHz     |
| HS-SFQ63-150N | 15.0                     | 0.082                    | 1.10                                      | 100KHz     |
| HS-SFQ63-180N | 18                       | 0.102                    | 1.05                                      | 100KHz     |
| HS-SFQ63-220N | 22.0                     | 0.119                    | 0.95                                      | 100KHz     |
| HS-SFQ63-270N | 27                       | 0.146                    | 0.85                                      | 100KHz     |
| HS-SFQ63-330N | 33.0                     | 0.183                    | 0.76                                      | 100KHz     |
| HS-SFQ63-390N | 39                       | 0.210                    | 0.68                                      | 100KHz     |
| HS-SFQ63-470N | 47.0                     | 0.230                    | 0.60                                      | 100KHz     |
| HS-SFQ63-560N | 56                       | 0.305                    | 0.55                                      | 100KHz     |
| HS-SFQ63-680N | 68.0                     | 0.351                    | 0.48                                      | 100KHz     |
| HS-SFQ63-820N | 82                       | 0.419                    | 0.45                                      | 100KHz     |
| HS-SFQ63-101N | 100.0                    | 0.520                    | 0.40                                      | 100KHz     |

# SHENZHEN HIGHSTARTECH ELECTRONICS CO., LTD

## HSSFQ SERIES

### HS-SFQ103 SERIES

| Part Number    | Inductance<br>( $\mu$ H) | DCR(max)<br>( $\Omega$ ) | IDC(A) (max)<br>L/L=-25%; $\Delta$ t=40 $^{\circ}$ C $\Delta$ | Test Freq. |
|----------------|--------------------------|--------------------------|---|------------|
| HS-SFQ103-100N | 10.0                     | 0.058                    | 2.70  | 100KHz     |
| HS-SFQ103-120N | 12.0                     | 0.072                    | 2.25  | 100KHz     |
| HS-SFQ103-150N | 15.0                     | 0.086                    | 2.22  | 100KHz     |
| HS-SFQ103-180N | 18.0                     | 0.116                    | 1.90  | 100KHz     |
| HS-SFQ103-220N | 22.0                     | 0.145                    | 1.78  | 100KHz     |
| HS-SFQ103-270N | 27.0                     | 0.175                    | 1.63  | 100KHz     |
| HS-SFQ103-330N | 33.0                     | 0.213                    | 1.46  | 100KHz     |
| HS-SFQ103-390N | 39                       | 0.269                    | 1.32  | 100KHz     |
| HS-SFQ103-470N | 47.0                     | 0.299                    | 1.18  | 100KHz     |
| HS-SFQ103-560N | 56                       | 0.336                    | 1.10  | 100KHz     |
| HS-SFQ103-680N | 68.0                     | 0.451                    | 1.04  | 100KHz     |
| HS-SFQ103-820N | 82                       | 0.534                    | 0.94  | 100KHz     |
| HS-SFQ103-101N | 100.0                    | 0.700                    | 0.84  | 100KHz     |
| HS-SFQ103-121N | 120                      | 0.765                    | 0.76  | 100KHz     |
| HS-SFQ103-151N | 150.0                    | 0.876                    | 0.70  | 100KHz     |

# SHENZHEN HIGHSTARTECH ELECTRONICS CO., LTD

## HSSFQ SERIES

### HS-SFQ104 SERIES

| Part Number    | Inductance<br>( $\mu$ H) | DCR(max)<br>( $\Omega$ ) | IDC(A) (max)<br>L/L=-35%; $\Delta$ t=40°C $\Delta$ | Test Freq. |
|----------------|--------------------------|--------------------------|--|------------|
| HS-SFQ104-1R5N | 1.5                      | 0.008                    | 10.00  | 100KHz     |
| HS-SFQ104-2R5N | 2.5                      | 0.010                    | 7.50   | 100KHz     |
| HS-SFQ104-3R8N | 3.8                      | 0.013                    | 6.00   | 100KHz     |
| HS-SFQ104-5R2N | 5.2                      | 0.022                    | 5.50   | 100KHz     |
| HS-SFQ104-7R0N | 7.0                      | 0.027                    | 4.80   | 100KHz     |
| HS-SFQ104-100N | 10.0                     | 0.035                    | 4.40   | 100KHz     |
| HS-SFQ104-150N | 15.0                     | 0.050                    | 3.60   | 100KHz     |
| HS-SFQ104-220N | 22                       | 0.073                    | 2.90   | 100KHz     |
| HS-SFQ104-330N | 33.0                     | 0.093                    | 2.30   | 100KHz     |
| HS-SFQ104-470N | 47                       | 0.128                    | 2.10   | 100KHz     |
| HS-SFQ104-680N | 68.0                     | 0.213                    | 1.50   | 100KHz     |
| HS-SFQ104-101N | 100                      | 0.304                    | 1.35   | 100KHz     |
| HS-SFQ104-151N | 150.0                    | 0.506                    | 1.15   | 100KHz     |
| HS-SFQ104-221N | 220                      | 0.756                    | 0.92   | 100KHz     |
| HS-SFQ104-331N | 330.0                    | 1.090                    | 0.70   | 100KHz     |

# SHENZHEN HIGHSTARTECH ELECTRONICS CO., LTD

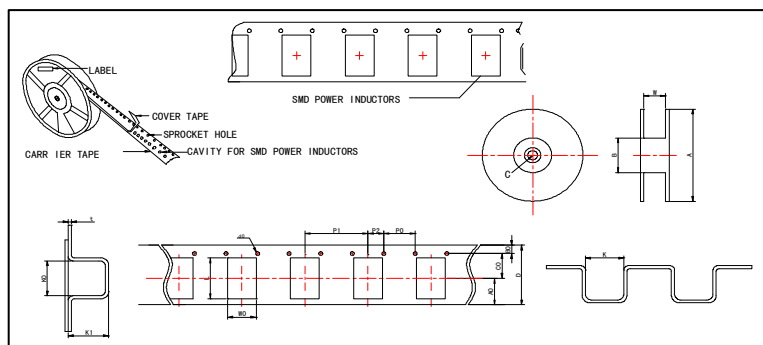
## HSSFQ SERIES

### HS-SFQ105 SERIES

| Part Number    | Inductance<br>( $\mu$ H) | DCR(max)<br>( $\Omega$ ) | IDC(A) (max)<br>L/L=-25%; $\Delta$ t=40°C $\Delta$ | Test Freq. |
|----------------|--------------------------|--------------------------|--|------------|
| HS-SFQ105-100N | 10                       | 0.026                    | 3.45   | 100KHz     |
| HS-SFQ105-120N | 12                       | 0.032                    | 3.40   | 100KHz     |
| HS-SFQ105-150N | 15                       | 0.040                    | 2.83   | 100KHz     |
| HS-SFQ105-180N | 18                       | 0.046                    | 2.62   | 100KHz     |
| HS-SFQ105-220N | 22                       | 0.059                    | 2.44   | 100KHz     |
| HS-SFQ105-270N | 27                       | 0.065                    | 2.24   | 100KHz     |
| HS-SFQ105-330N | 33                       | 0.081                    | 1.88   | 100KHz     |
| HS-SFQ105-390N | 39                       | 0.103                    | 1.70   | 100KHz     |
| HS-SFQ105-470N | 47                       | 0.122                    | 1.56   | 100KHz     |
| HS-SFQ105-560N | 56                       | 0.145                    | 1.39   | 100KHz     |
| HS-SFQ105-680N | 68                       | 0.193                    | 1.36   | 100KHz     |
| HS-SFQ105-820N | 82                       | 0.219                    | 1.20   | 100KHz     |
| HS-SFQ105-101N | 100                      | 0.247                    | 1.09   | 100KHz     |
| HS-SFQ105-121N | 120                      | 0.298                    | 1.00   | 100KHz     |
| HS-SFQ105-151N | 150                      | 0.355                    | 0.91   | 100KHz     |
| HS-SFQ105-181N | 180                      | 0.393                    | 0.84   | 100KHz     |
| HS-SFQ105-221N | 220                      | 0.484                    | 0.75   | 100KHz     |
| HS-SFQ105-271N | 270                      | 0.633                    | 0.68   | 100KHz     |
| HS-SFQ105-331N | 330                      | 0.780                    | 0.60   | 100KHz     |
| HS-SFQ105-391N | 390                      | 0.958                    | 0.57   | 100KHz     |
| HS-SFQ105-471N | 470                      | 1.220                    | 0.50   | 100KHz     |
| HS-SFQ105-561N | 560                      | 1.352                    | 0.47   | 100KHz     |
| HS-SFQ105-681N | 680                      | 1.519                    | 0.43   | 100KHz     |
| HS-SFQ105-821N | 820                      | 1.694                    | 0.39   | 100KHz     |
| HS-SFQ105-102N | 1000                     | 1.964                    | 0.35   | 100KHz     |

# SHENZHEN HIGHSTARTECH ELECTRONICS CO., LTD

## HSSFQ SERIES



### ●Reel Dimensions & Packing Unit

UNIT:mm

| Part Number | Dimensions of Reel |            |            |           | Packaging Unit |
|-------------|--------------------|------------|------------|-----------|----------------|
|             | A                  | B          | C          | W         |                |
| HS-SFQ63    | 330                | 100.0±2.00 | 13.50±0.50 | 12.0±0.50 | 2000pcs/r      |
| HS-SFQ103   | 330                | 100.0±2.00 | 13.50±0.50 | 24.0±0.50 | 1000pcs/r      |
| HS-SFQ104   | 330                | 100.0±2.00 | 13.50±0.50 | 24.0±0.50 | 1000pcs/r      |
| HS-SFQ105   | 330                | 100.0±2.00 | 13.50±0.50 | 24.0±0.50 | 1000pcs/r      |

### ●Carrier Tape Dimensions

UNIT:mm

| Sym. | HS-SFQ63   | HS-SFQ103  | HS-SFQ104  | HS-SFQ105  |
|------|------------|------------|------------|------------|
| A0   | 6.75±0.10  | 10.75±0.10 | 10.75±0.10 | 10.75±0.10 |
| B0   | 1.75±0.10  | 1.75±0.10  | 1.75±0.10  | 1.75±0.10  |
| C0   | 7.5±0.10   | 11.50±0.10 | 11.50±0.10 | 11.50±0.10 |
| D    | 16.00±0.30 | 24.00±0.30 | 24.00±0.30 | 24.00±0.30 |
| K    | 6.40±0.20  | 10.50±0.20 | 10.50±0.20 | 10.50±0.20 |
| K0   | 6.50±0.20  | 10.60±0.20 | 10.60±0.20 | 10.60±0.20 |
| K1   | 3.20±0.10  | 3.20±0.10  | 4.20±0.10  | 5.20±0.10  |
| L    | 6.90±0.20  | 11.00±0.20 | 11.00±0.20 | 11.00±0.20 |
| W0   | 6.80±0.20  | 10.90±0.20 | 10.90±0.20 | 10.90±0.20 |
| P0   | 4.00±0.10  | 4.00±0.10  | 4.00±0.10  | 4.00±0.10  |
| P1   | 12.00±0.10 | 16.00±0.10 | 16.00±0.10 | 16.00±0.10 |
| P2   | 2.00±0.05  | 2.00±0.05  | 2.00±0.05  | 2.00±0.05  |
| d0   | 1.55±0.05  | 1.55±0.05  | 1.55±0.05  | 1.55±0.05  |
| t    | 0.40±0.05  | 0.40±0.05  | 0.40±0.05  | 0.40±0.05  |